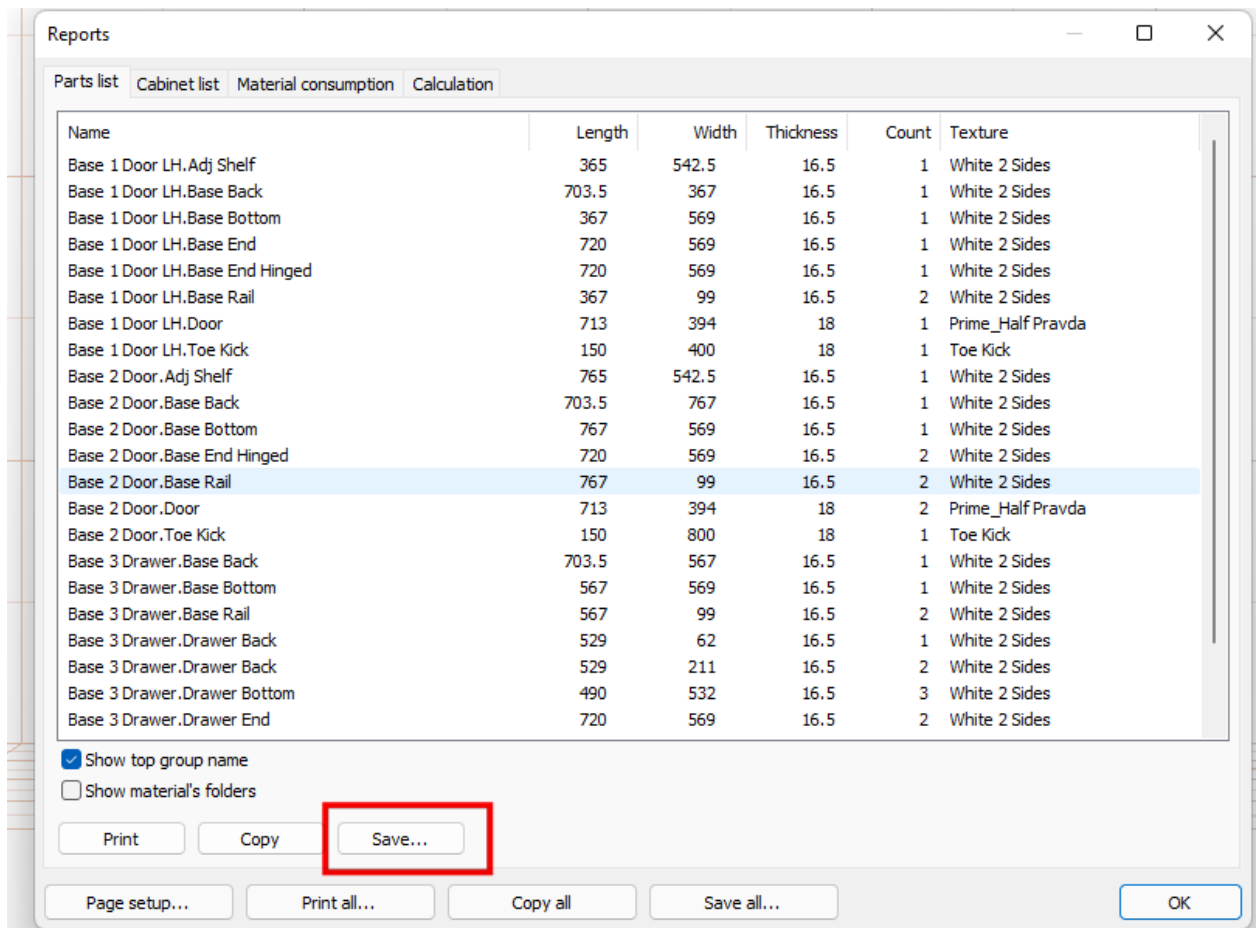


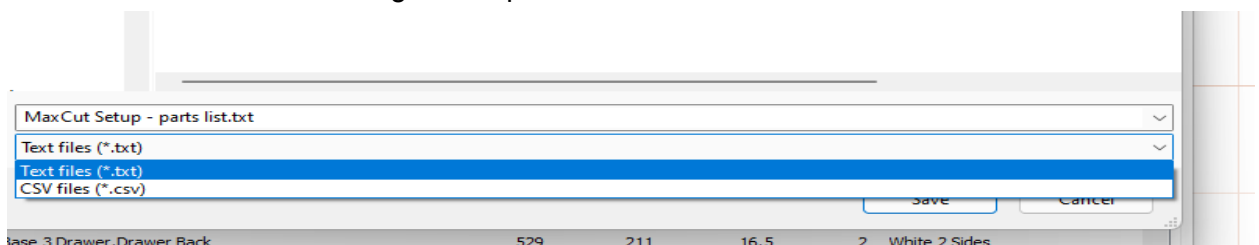
How to Import from PRO100 to Max Cut 2

You can import the cutting list from PRO100 directly into Max Cut 2 to obtain a nest layout for a panel saw or just to work out how many sheets are required for the project.

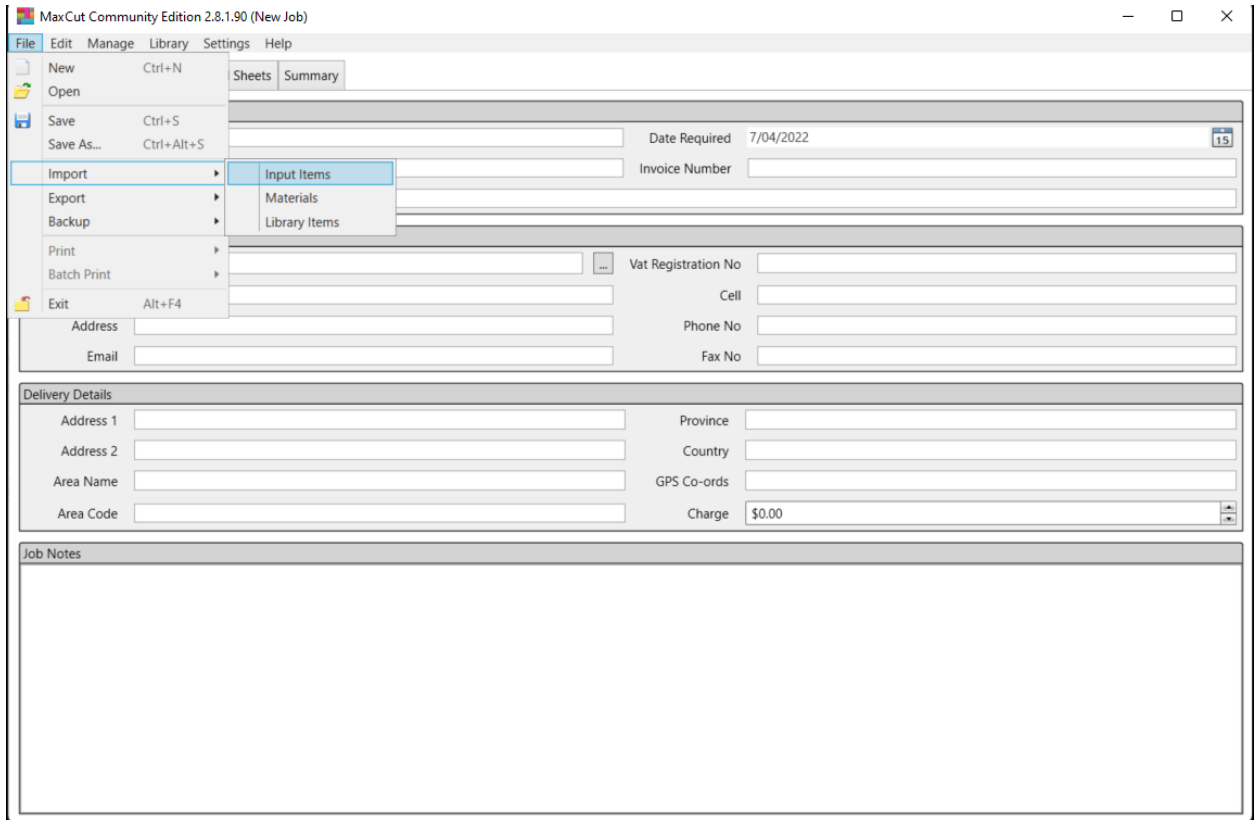
1. In PRO100 go to Reports and click on the parts list tab.



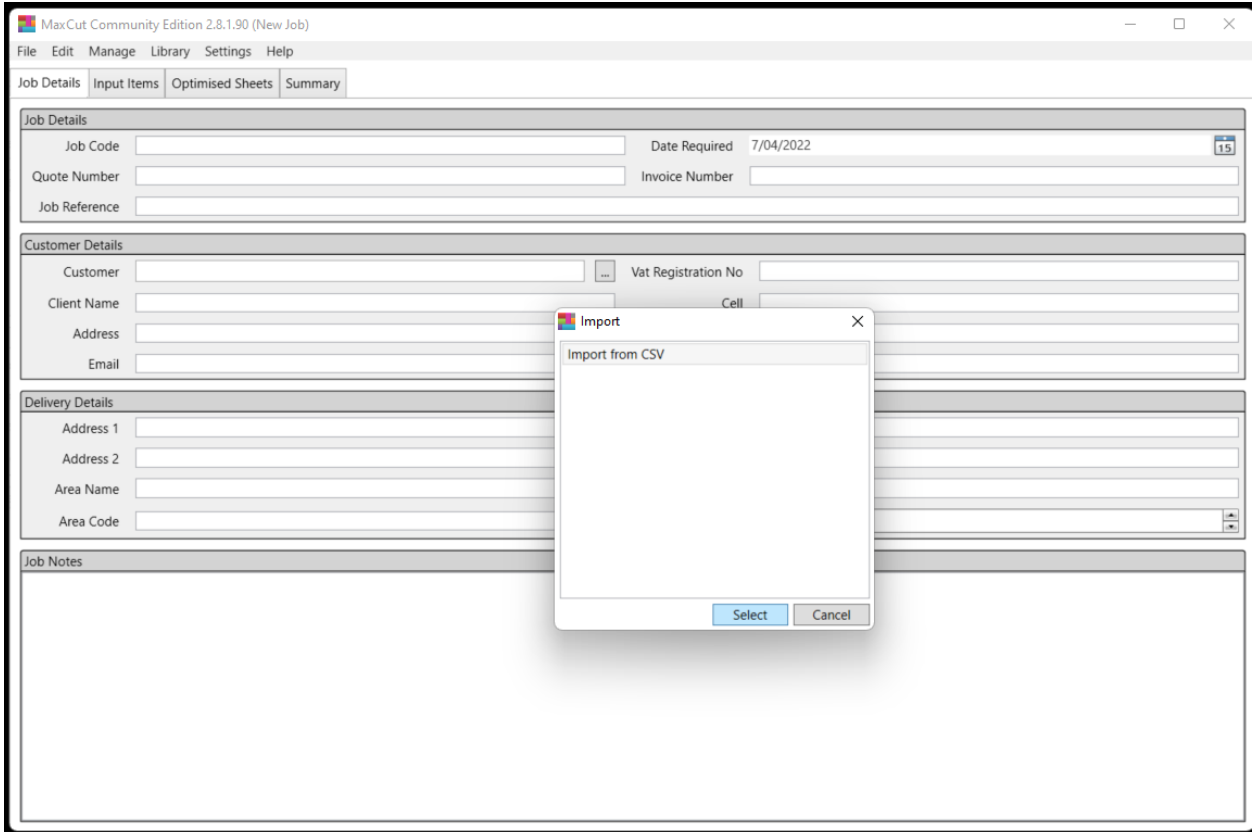
2. Save this list as a csv file using the drop box on save.



3. Now open Max Cut 2 and click File Import - input items.



4. It will show a box import from csv, click select and search for your file you exported from PRO100.



- Click open when you have the file and you will get a screen to “map” the fields to Max Cut 2 as below.

Import CSV

Select the column number of each field as it appears in your CSV file. Select how your text is separated with the delimiters.

Column Positions		Preview							
Field	Column	1. Name	2. Length	3. Edging Len	4. Width	5. Edging Wir	<Select>	7. Quantity	8. Material
Type	<None>	Base 1 Door LI	365		542.5		16.5	1	White 2 Sides
Name	1	Base 1 Door LI	703.5		367		16.5	1	White 2 Sides
Length	2	Base 1 Door LI	367		569		16.5	1	White 2 Sides
Width	4	Base 1 Door LI	720		569		16.5	1	White 2 Sides
Quantity	7	Base 1 Door LI	720		569		16.5	1	White 2 Sides
Notes	<None>	Base 1 Door LI	367		99		16.5	2	White 2 Sides
Can Rotate	<None>	Base 1 Door LI	713		394		18	1	Prime_Half Pr
Material	8	Base 1 Door LI	150		400		18	1	Toe Kick
Edging Length 1	<None>	Base 2 Door.A	765		542.5		16.5	1	White 2 Sides
Edging Length 2	<None>	Base 2 Door.B:	703.5		767		16.5	1	White 2 Sides
Edging Width 1	<None>	Base 2 Door.B:	767		569		16.5	1	White 2 Sides
Edging Width 2	<None>	Base 2 Door.B:	720		569		16.5	2	White 2 Sides
Include Edging Thickness	<None>	Base 2 Door.B:	767		99		16.5	2	White 2 Sides
Note 1	<None>	Base 2 Door.D	713		394		18	2	Prime_Half Pr
Note 2	<None>								
Note 3	<None>								
Note 4	<None>								
Group	<None>								
Report Tags	<None>								

Delimiters

Tab
 Semicolon
 Comma
 Space
 Use Regional Setting
 Other

Text Qualifier: *

Options...

Exclude First Row

Restore Defaults

Import Cancel

- Once you have the main fields mapped, name, length width Thickness Qty and Material you can click import.

Missing Materials

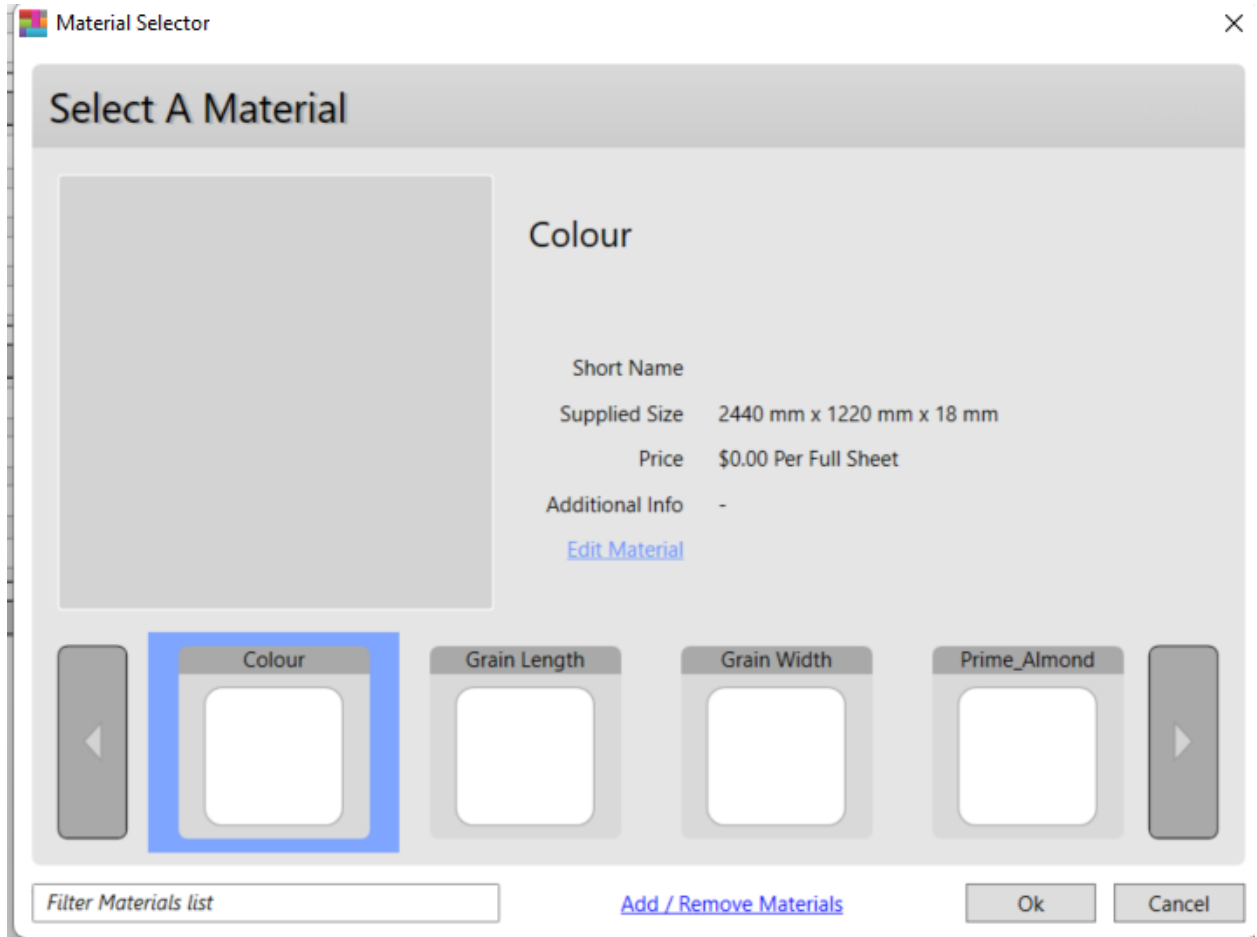
Unrecognized Materials

The following materials were not recognized, please select replacement materials

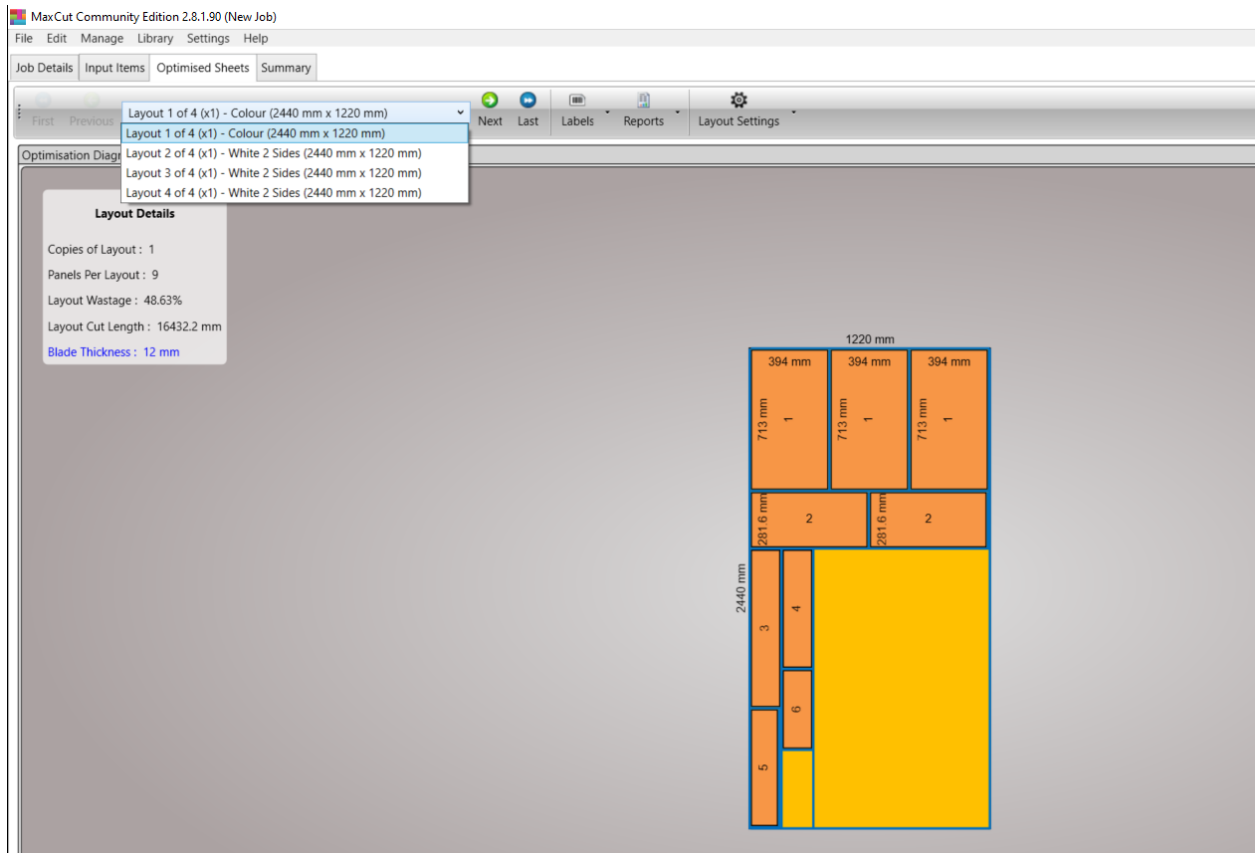
Name	Type	Replacement
Prime_Half Pravda	Sheet	<Please Select>
Toe Kick	Sheet	Grain Length

Update Cancel

7. You will get a screen that says unrecognized Materials, you can replace these for any default material or set up your own materials such as Colour and White 2 Sides.



10. You can then optimise the project and see your results in the optimised sheets tab.



You have now imported and received your results.